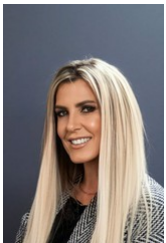
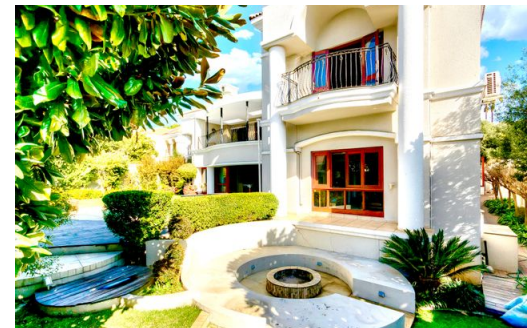
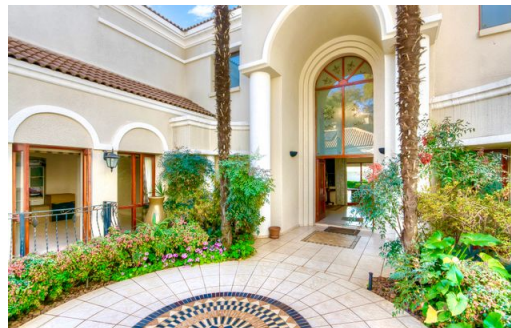




ADRIENNE
HERSCH
PROPERTIES
ONLY REALTY

R10,999,000

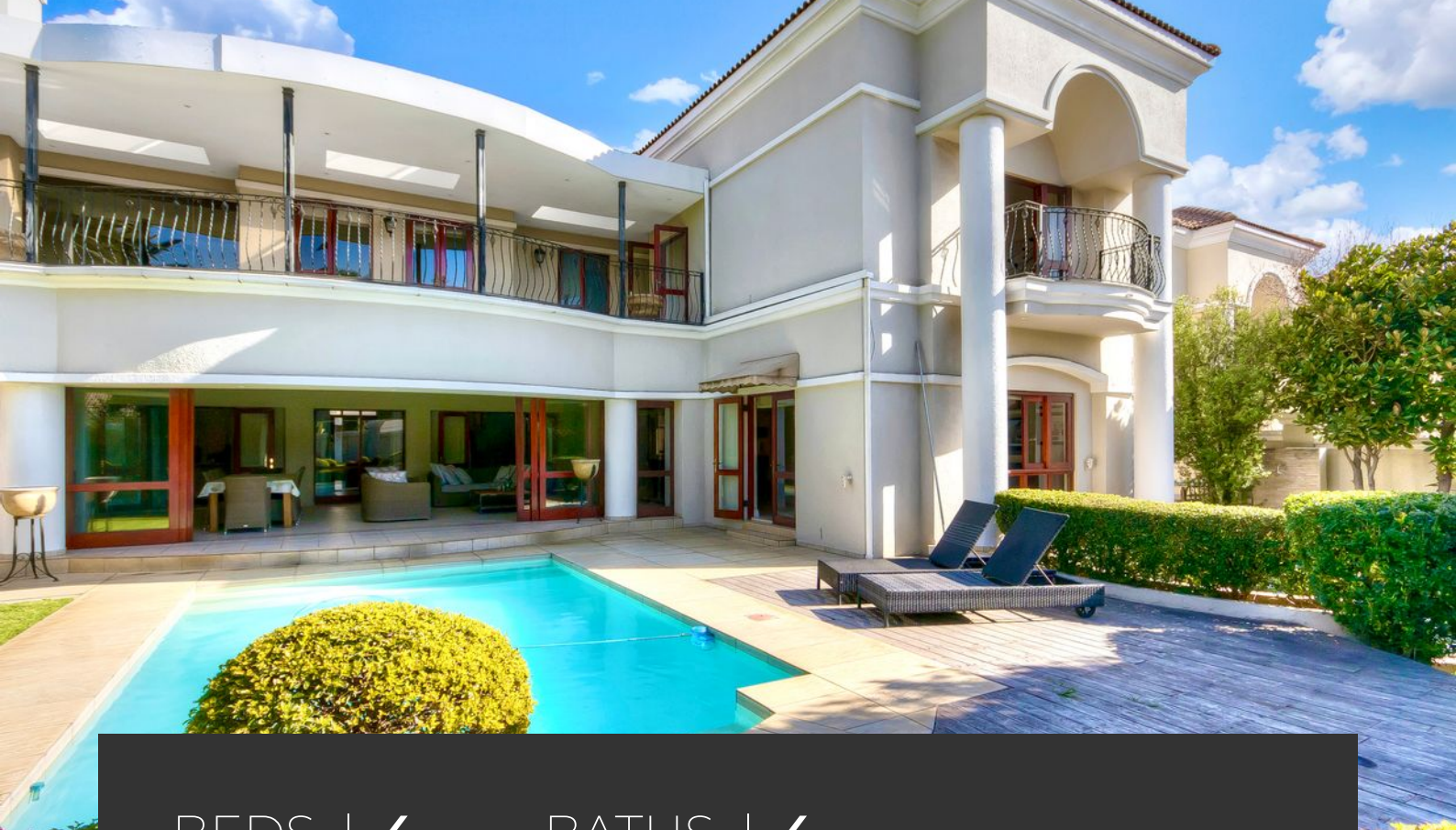
Gated Estate For Sale in Morningside



Jodi Gordon
Agent

jodi.g@ahprop.co.za
+27848951862

24 Hour Access • Alarm System • Awning • Backup Water • Cluster Home • Covered Patio • Deck • Built in Wardrobes • Jacuzzi • Estate • Safe • Guard House • Security Estate • Walk In Closet



BEDS | 4 BATHS | 4
GARAGES | 2

Land Size 1270m²

Pool Yes

Rates -

Floor Size 850m²

Balcony Large covered Balcony...

Levy -

This beyond spectacular, exceptional home of class and distinction boasts expansive architecturally designed features entering a masterpiece of soaring ceilings and bespoke cabinetry with rare and exciting hidden treasures. Being one of a kind, it sets itself apart from all others. A residence of great stature and worth in and amongst the property circles of the greater upmarket Morningside area. Setting a precedent in the clear distinction between that of luxury homes and homes above and beyond the diamond status level of top notch property portfolio holders, investment and home owners, in this illustrious and well sought after northern suburbs ultra exclusive enclave of super homes. We welcome you to feast upon this once in a lifetime A class gem with delight and pleasure. Set on a large double stand. The grand entrance and immense walkthrough elaborates the sheer extent of its superiority and elegance in its standalone luxurious manner. Designed and created for the comfort of an extra large and extended family with no expense spared in any area. Borehole, and back up, double gated and secured with 24 hour secured guard facilities.

The extravagance is tasteful and stylish yet understated and handpicked from the best craftsmanship in all areas from lush lawns and panoramic windows. The home boasts 4 grand extra extra large En-suite suites, the master suite boasts a walk in expansive dressing room and lounge area, there are 3 additional En-suite bedrooms found upstairs in a private wing with an additional lounge / gym or playroom, and study area.

The living rooms include a full size dining area attached to the extensive, luxurious open plan massive master chef kitchen and scullery. An extra large open plan formal dining and lounge area, flowing to an additional seating and outdoor / indoor enclosed living area. PLUS A full size extra large seated theatre. The expansive outdoor living areas overlooks a resort style decked pool, with extensive luxurious outdoor facilities flowing from magical moment to another, ice blue sparkling pool, to elevated hot tub to the seated dipped fire pit - the perfect energy and ambience for a well rounded family.

The home, is in immaculate condition, has a distinctive level of class and elegance, creating a lifestyle and not just a home.

VIEWING BY PRE APPROVED APPOINTMENT ONLY